

Exhibition Information

1 VISITOR CENTER Ongoing

Tickets, information, a display of objects from our collection, and an immersive, two-room exhibition about the Museum's mission.

2 THE WALL/EL MURO: WHAT IS A BORDER WALL? Through July 3, 2023

Offers unique, multi-media exploration of the history and impact of the US-Mexico Border.

3 GUN VIOLENCE MEMORIAL PROJECT Through March 7, 2023

Free

Four glass houses, a tribute to the thousands of lives lost to gun violence, are spaces of remembrance and healing.

4 A BETTER WAY HOME: THE HOUSING AFFORDABILITY BREAKTHROUGH CHALLENGE Friday, October 21

Free

Engage with inventive approaches to housing affordability in this presentation of winners from an Enterprise Community Partners and Wells Fargo competition.

5 JUSTICE IS BEAUTY: THE WORK OF MASS DESIGN GROUP Through March 7, 2023

The globe-spanning work of a young nonprofit architecture firm focused on public health, personal wellbeing, and social justice.

6 ANIMALS, COLLECTED Ongoing

Architectural objects depicting all kinds of animals—a curious and wonderful zoo pulled from our permanent collection.

7 HOUSE & HOME Ongoing

Discover houses both familiar and surprising, challenging ideas about what it means to live at home in America.

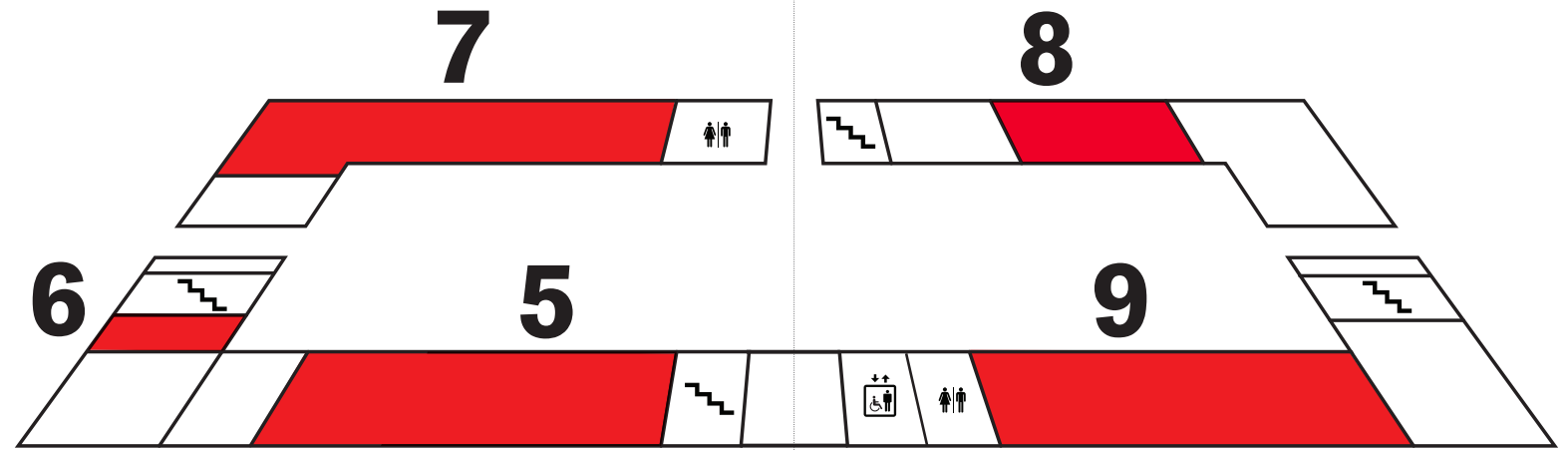
8 ALAN KARCHMER: THE ARCHITECTS' PHOTOGRAPHER Through August 14, 2023

See the work of a master image-maker in large format, including iconic photographs of projects by top architects.

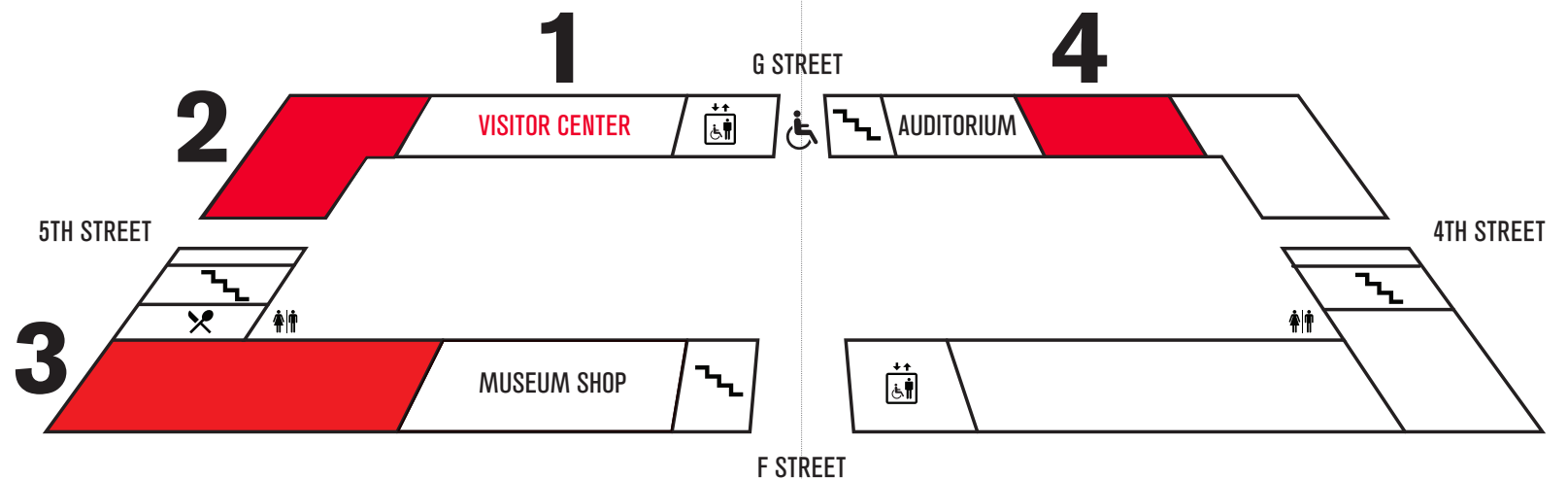
9 PLAY WORK BUILD Ongoing

Explore the past, present, and future of play in this hands-on experience featuring foam blocks of many shapes and sizes.

Exhibition Map



2ND FLOOR



1ST FLOOR

COVID SAFETY RULES

- Masks encouraged for all visitors aged 2 and up.
- Please maintain a safe social distance.



Hours & Admission

HOURS

Thursday–Monday, 11 am–4 pm

EXHIBITION ADMISSION

Free for Museum Members and children 2 and under.

\$10 for adults

\$7 for youth (3–17), students with ID, and seniors (60+)

LOCATION

401 F Street NW Washington, DC 20001

Public entrances are on F Street NW, directly across from the Metro entrance; 5th Street NW; and G Street NW.

Accessibility entrances are on G and 4th Streets.

Wheelchairs are available at the Information Desk.

Metro: Judiciary Square (**Red** Line),
Gallery Place–Chinatown (**Red**, **Green**, **Yellow** lines)

For more information: www.nbm.org, info@nbm.org,
or 202.272.2448.

 NationalBuildingMuseum

 @NationalBuildingMuseum

 @BuildingMuseum

 @Buildingmuseum



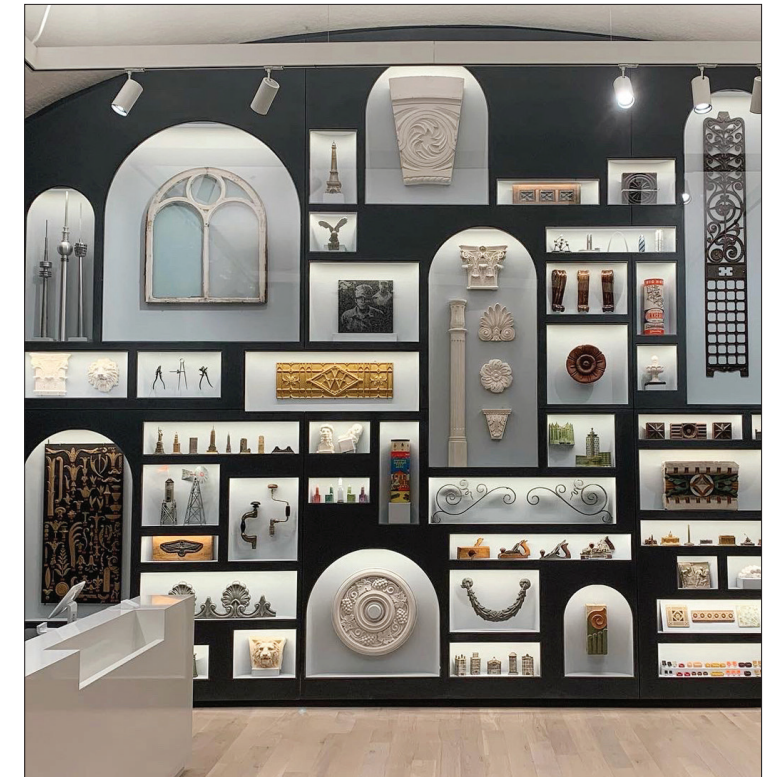
NATIONAL BUILDING MUSEUM VISITOR GUIDE



THE NATIONAL BUILDING MUSEUM
INSPIRES CURIOSITY ABOUT THE WORLD
WE DESIGN AND BUILD

Visitor Center

Tickets to exhibitions may be purchased at the new Visitor Center, located on the ground floor. Here, you'll see an amazing array of objects from our collection, find information on programs and other events, and learn about the Museum's focus on the built environment.



Membership

We invite you to join as a member to enjoy special access and benefits while supporting the Museum's educational programs and exhibitions.

Benefits include free admission to exhibitions, Museum Shop discounts, Member Preview Days, and more!

To sign up, visit the Admissions Desk, Museum Shop, or online at go.nbm.org/membership.

