

Ready, Set, Draw!

Try elevation, plan, and section drawings

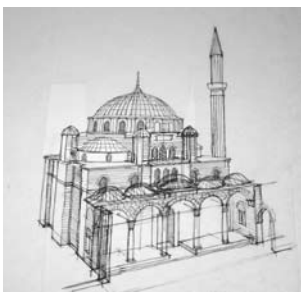
Architects draw **elevations**, **floor plans**, and **sectional views** of buildings to explain and help others build their designs. Each kind of drawing shows a different view that describes how the outside and the inside of the building relate to one another. The drawings work together as a set of visual directions.

Drawings can be used to visually explain almost anything, even a pepper! Now it's your turn to draw an elevation, a plan, and a section. **You will need two bell peppers, a knife (plastic is fine), paper, and crayons, markers, or colored pencils. Be sure to ask a parent or guardian for permission and help if you're under 12-years-old.**



Elevation

An elevation is the exterior of an object being viewed from front, side, or back. For example, how tall and wide is a wall, and does it have a window or a door?



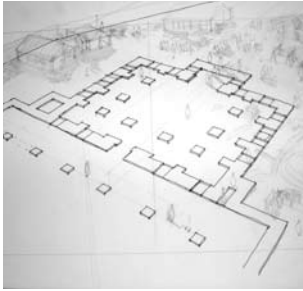
David Macaulay, Mosque with completed dome, Sketch for *Mosque*, 2003



Step 1: Set your bell pepper upright and draw the elevation of one side. **Need help?** Lay the bell pepper on its side and trace around it. This outline gives you part of the elevation. Is anything missing? If so, add it to your drawing.

Plan

A floor plan is a view from above and it shows you the outside edges of a building and the placement of its interior walls. You can think of it as a bird's-eye view, or what you would see if you sliced off the roof of a building and looked inside.



David Macaulay, Mosque foundation with surrounding buildings, Sketch for *Mosque*, 2003

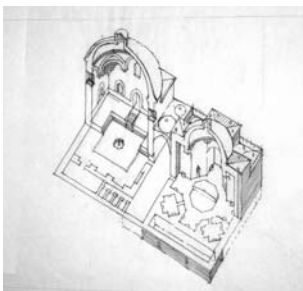


Step 2: Cut one bell pepper horizontally, or crosswise, and draw the plan for what you see when you look straight down.

Need help? Turn either half of the bell pepper, cut side facing down, onto your paper and trace around it. This outline gives you the outside edges of the plan. Now fill in what you see inside.

Section

A section is a view from the side and, similar to a plan, shows you the outside edges of a building and the placement of its interior walls. Think of it as a dollhouse view, or what you would see if you sliced off the front, back, or side of a building and looked inside.



David Macaulay, Section of hamam, or public bathhouse, Sketch for *Mosque*, 2003



Step 3: Cut the second bell pepper vertically, or lengthwise, and draw the section for what you see. **Need help?** Turn either half of the bell pepper, cut side facing down, onto your paper and trace around it. This outline gives you the edges of the section. Fill in what you see inside. How does it differ from the plan?

Congratulations you've drawn an elevation, a plan, and a section.